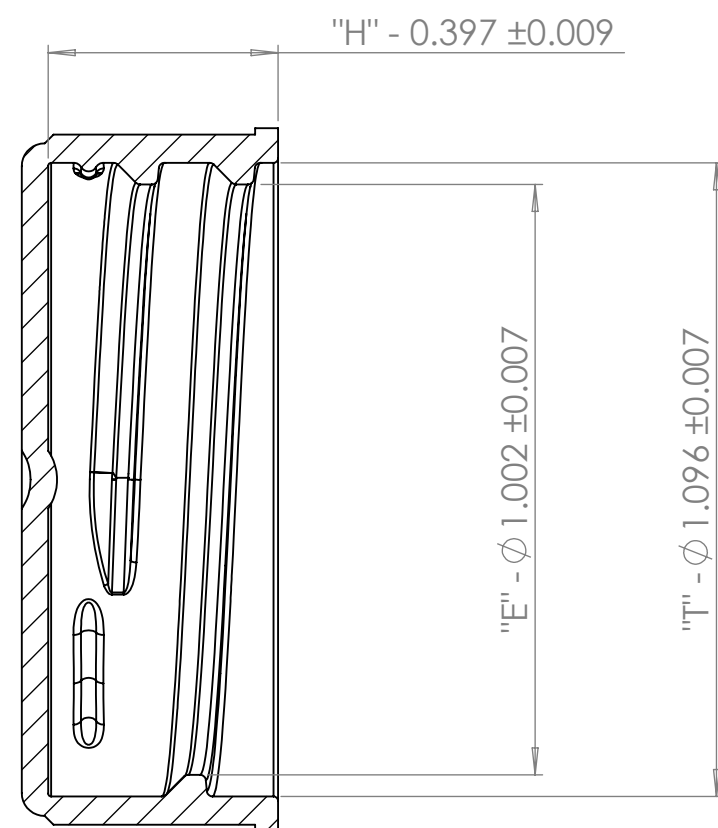
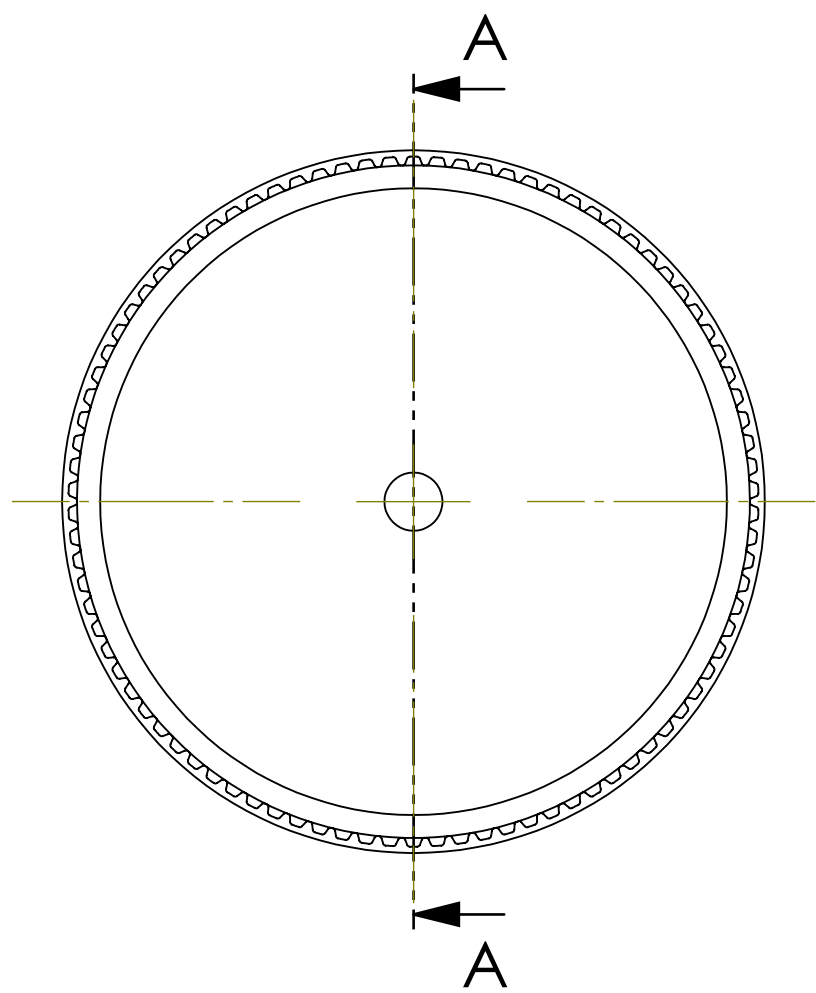


4

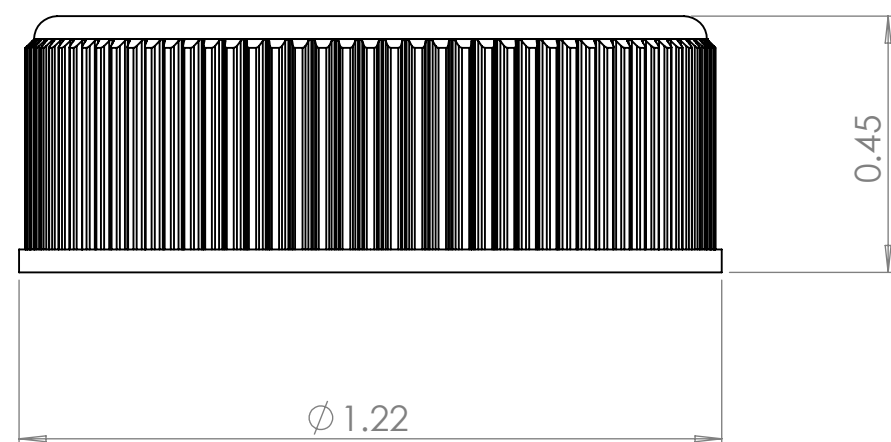
3

2

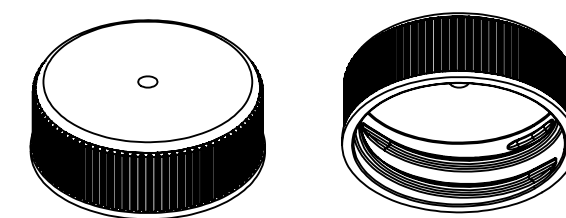
1



SECTION A-A



- NOTE(S):
1. THREAD FORM - 28-400
 2. PITCH - 0.167" (6 T.P.I.)
 3. THREAD TURNS - 1.25



PROPRIETARY AND CONFIDENTIAL
 THE INFORMATION CONTAINED IN THIS DRAWING IS THE SOLE PROPERTY OF PHARMACY-LITE. ANY REPRODUCTION IN PART OR AS A WHOLE WITHOUT THE WRITTEN PERMISSION OF PHARMACY-LITE IS PROHIBITED.

UNLESS OTHERWISE SPECIFIED:		NAME	DATE
DIMENSIONS ARE IN INCHES		DRAWN	BC 11/12/25
TOLERANCES:		CHECKED	
FRACTIONAL: 1/32		ENG APPR.	
ANGULAR: MACH ±0.1°		MFG APPR.	
BEND ±2.5°		Q.A.	
TWO PLACE DECIMAL ±0.015		COMMENTS:	
THREE PLACE DECIMAL ±0.005			
INTERPRET GEOMETRIC TOLERANCING PER:			
MATERIAL			
POLYPROPYLENE			
FINISH			
NEXT ASSY	USED ON		
APPLICATION			

PAC-LITE		
250 Warden Ave., Elyria, OH 44035 844-527-5483		
TITLE: 28mm-EZ NCR (RIBBED) CAP		
SIZE	DWG. NO.	REV
C	EZ-28R NCR/P000CD	1
SCALE: 3:1	WEIGHT:	SHEET 1 OF 1

4

3

2

1

D

D

C

C

B

B

A

A